

Product datasheet for **TA310131**

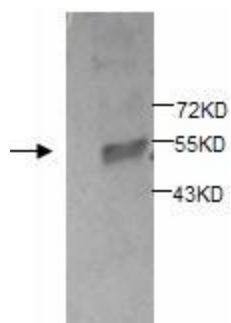
SMPDL3B Rabbit Polyclonal Antibody

Product data:

Product Type:	Primary Antibodies
Applications:	WB
Recommended Dilution:	WB: 1:200
Reactivity:	Human
Host:	Rabbit
Isotype:	IgG
Clonality:	Polyclonal
Immunogen:	Synthetic peptide conjugated to KLH
Formulation:	PBS, pH 7.4 with 0.05% sodium azide.
Concentration:	lot specific
Purification:	Purified
Conjugation:	Unconjugated
Storage:	Store at -20°C as received.
Stability:	Stable for 12 months from date of receipt.
Gene Name:	sphingomyelin phosphodiesterase acid like 3B
Database Link:	NP_055289 Entrez Gene 27293 Human Q92485
Synonyms:	ASML3B
Protein Families:	Secreted Protein



[View online »](#)

Product images:

Western blot analysis of fetal intestine lysates with anti-SMPDL3B antibody (1:200). This antibody identified a band of ~52kDa in fetal intestine lysates.