

## Product datasheet for **TA310130**

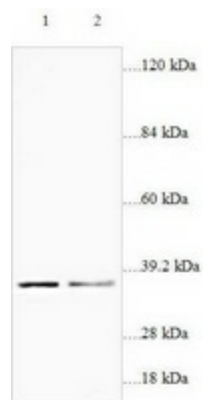
### RPS2 Rabbit Polyclonal Antibody

#### Product data:

Product Type:	Primary Antibodies
Applications:	WB
Recommended Dilution:	WB: 1:500~1:1000
Reactivity:	Human
Host:	Rabbit
Isotype:	IgG
Clonality:	Polyclonal
Immunogen:	Synthetic peptide derived from Human RPS2.
Formulation:	PBS, pH 7.4 with 0.02% sodium azide.
Concentration:	lot specific
Purification:	Affinity purified
Conjugation:	Unconjugated
Storage:	Store at -20°C as received.
Stability:	Stable for 12 months from date of receipt.
Gene Name:	ribosomal protein S2
Database Link:	<a href="#">NP_002943</a> <a href="#">Entrez Gene 6187 Human P15880</a>
Synonyms:	LLREP3; S2
Protein Pathways:	Ribosome



[View online »](#)

**Product images:**

Western blot analysis of ECL cells (Lane 1: 56ug cell lysate) and Jurkat cells (Lane 2: 32ug cell lysate) with anti-RPS2 antibody diluted at 1:1000.