

Product datasheet for **TA310129**

RPL37 Rabbit Polyclonal Antibody

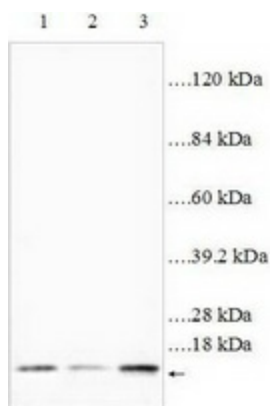
Product data:

Product Type:	Primary Antibodies
Applications:	WB
Recommended Dilution:	WB: 1:500~1:1000
Reactivity:	Human
Host:	Rabbit
Isotype:	IgG
Clonality:	Polyclonal
Immunogen:	Synthetic peptide derived from Human RPL37.
Formulation:	PBS, pH 7.4 with 0.02% sodium azide.
Concentration:	lot specific
Purification:	Affinity purified
Conjugation:	Unconjugated
Storage:	Store at -20°C as received.
Stability:	Stable for 12 months from date of receipt.
Gene Name:	ribosomal protein L37
Database Link:	NP_000988 Entrez Gene 6167 Human P61927
Synonyms:	L37
Protein Pathways:	Ribosome



[View online »](#)

Product images:



Western blot analysis of Jurkat cells (Lane 1: 28ug cell lysate), SGC cells (25ug cell lysate) and Thp-1 cells (Lane 3: 36ug cell lysate) with anti-RPL7 antibody diluted at 1:2000.