

Product datasheet for **TA310128**

RPL13 Rabbit Polyclonal Antibody

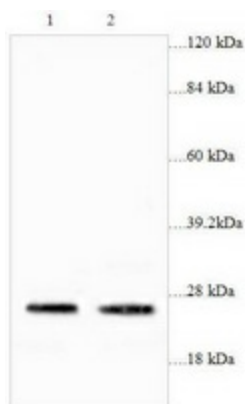
Product data:

Product Type:	Primary Antibodies
Applications:	WB
Recommended Dilution:	WB: 1:500~1:1000
Reactivity:	Human
Host:	Rabbit
Isotype:	IgG
Clonality:	Polyclonal
Immunogen:	Synthetic peptide derived from Human RPL13.
Formulation:	PBS, pH 7.4 with 0.02% sodium azide.
Concentration:	lot specific
Purification:	Affinity purified
Conjugation:	Unconjugated
Storage:	Store at -20°C as received.
Stability:	Stable for 12 months from date of receipt.
Gene Name:	ribosomal protein L13
Database Link:	NP_000968 Entrez Gene 6137 Human P26373
Synonyms:	BBC1; D16S44E; D16S444E; L13
Protein Families:	Druggable Genome
Protein Pathways:	Ribosome



[View online »](#)

Product images:



Western blot analysis of Thp-1 cells (Lane 1: 77ug cell lysate) and ECL cells (Lane 2: 43ug cell lysate) with anti-RPL13 antibody diluted at 1:1000.