

## Product datasheet for **TA310127**

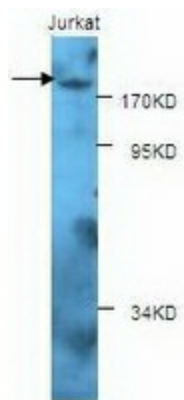
### Retinoblastoma binding protein 6 (RBBP6) Rabbit Polyclonal Antibody

#### Product data:

Product Type:	Primary Antibodies
Applications:	WB
Recommended Dilution:	WB: 1:250
Reactivity:	Human
Host:	Rabbit
Isotype:	IgG
Clonality:	Polyclonal
Immunogen:	Synthetic peptide conjugated to KLH
Formulation:	PBS, pH 7.4 with 0.05% sodium azide.
Concentration:	lot specific
Purification:	Purified
Conjugation:	Unconjugated
Storage:	Store at -20°C as received.
Stability:	Stable for 12 months from date of receipt.
Gene Name:	RB binding protein 6, ubiquitin ligase
Database Link:	<a href="#">NP_008841</a> <a href="#">Entrez Gene 5930 Human</a> <a href="#">Q7Z6E9</a>
Synonyms:	MY038; P2P-R; PACT; RBQ-1; SNAMA
Protein Families:	Druggable Genome



[View online »](#)

**Product images:**

Western blot analysis of Jurkat cell lysates with anti-RBBP6 antibody (1:250). This antibody identified a band of ~205kDa in Jurkat lysates.