

Product datasheet for **TA310126**

PKC eta (PRKCH) Rabbit Polyclonal Antibody

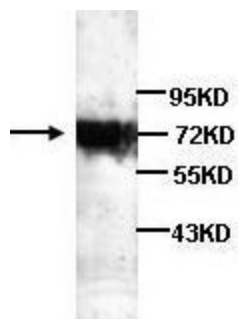
Product data:

Product Type:	Primary Antibodies
Applications:	WB
Recommended Dilution:	WB: 1:500~1:1000
Reactivity:	Human
Host:	Rabbit
Isotype:	IgG
Clonality:	Polyclonal
Immunogen:	Synthetic peptide conjugated to KLH
Formulation:	Rabbit IgG in phosphate buffered saline (without Mg ²⁺ and Ca ²⁺), pH 7.4, 150mM NaCl, 0.02% sodium azide and 50% glycerol.
Concentration:	lot specific
Purification:	Affinity purified
Conjugation:	Unconjugated
Storage:	Store at -20°C as received.
Stability:	Stable for 12 months from date of receipt.
Gene Name:	protein kinase C eta
Database Link:	NP_006246 Entrez Gene 5583 Human P24723
Synonyms:	nPKC-eta; PKC-L; PKCL; PRKCL
Protein Families:	Druggable Genome, Protein Kinase
Protein Pathways:	Tight junction, Vascular smooth muscle contraction



[View online »](#)

Product images:



Western blot analysis of Jurkat cell lysates with anti-PRKCH antibody (1:200).