

Product datasheet for **TA310125**

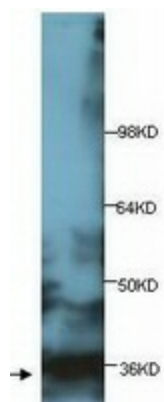
PPP6C Rabbit Polyclonal Antibody

Product data:

Product Type:	Primary Antibodies
Applications:	WB
Recommended Dilution:	WB: 1:1000
Reactivity:	Human, Mouse, Rat
Host:	Rabbit
Isotype:	IgG
Clonality:	Polyclonal
Immunogen:	Synthetic peptide conjugated to KLH
Formulation:	PBS, pH 7.4 with 0.05% sodium azide.
Concentration:	lot specific
Purification:	Protein A purified
Conjugation:	Unconjugated
Storage:	Store at -20°C as received.
Stability:	Stable for 12 months from date of receipt.
Gene Name:	protein phosphatase 6 catalytic subunit
Database Link:	NP_002712 Entrez Gene 67857 Mouse Entrez Gene 171121 Rat Entrez Gene 5537 Human O00743
Synonyms:	PP6; PP6C
Protein Families:	Druggable Genome, Phosphatase



[View online »](#)

Product images:

Western blot analysis of fetal testis lysates with anti-PPP6C antibody (1:1000). This antibody identified a band of ~34kDa.