

## Product datasheet for **TA310123**

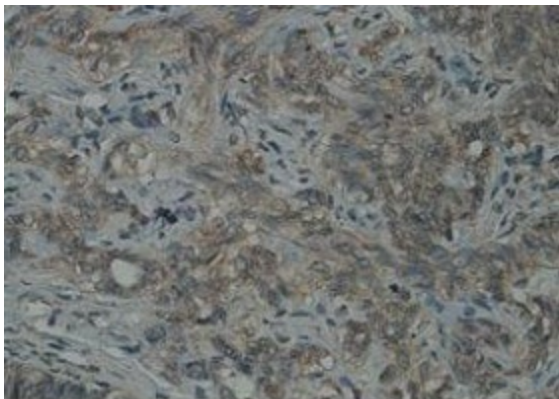
### PIWIL3 Rabbit Polyclonal Antibody

#### Product data:

Product Type:	Primary Antibodies
Applications:	IHC
Recommended Dilution:	WB: 1:100~500, ELISA: 1:40,000~80,000
Reactivity:	Human
Host:	Rabbit
Isotype:	IgG
Clonality:	Polyclonal
Immunogen:	Rabbit polyclonal PIWIL3 antibody was raised against a peptide from the intermediate residues of human PIWIL3 protein.
Formulation:	PBS, pH 7.4 with 0.02% sodium azide.
Concentration:	lot specific
Purification:	Affinity purified
Conjugation:	Unconjugated
Storage:	Store at -20°C as received.
Stability:	Stable for 12 months from date of receipt.
Gene Name:	piwi like RNA-mediated gene silencing 3
Database Link:	<a href="#">NP_001008496</a> <a href="#">Entrez Gene 440822 Human</a> <a href="#">Q7Z3Z3</a>
Synonyms:	HIWI3
Protein Pathways:	Dorso-ventral axis formation



[View online »](#)

**Product images:**

Immunohistochemical staining of formalin-fixed paraffin-embedded testis showing nuclear staining with anti-PIWIL3 antibody diluted at 1:100.