

## Product datasheet for **TA310121**

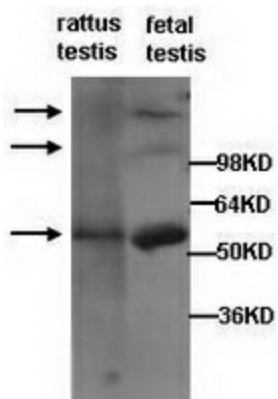
### PIWIL1 Rabbit Polyclonal Antibody

#### Product data:

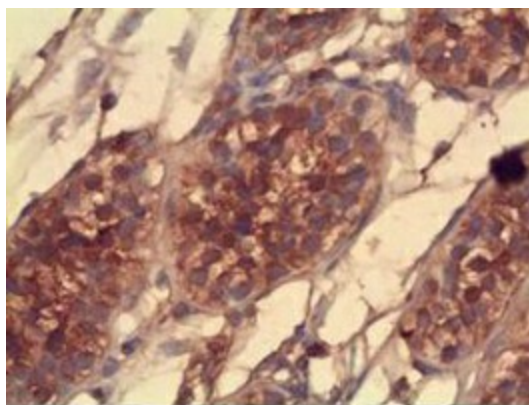
Product Type:	Primary Antibodies
Applications:	IHC, WB
Recommended Dilution:	WB: 1:500
Reactivity:	Human, Mouse, Rat
Host:	Rabbit
Isotype:	IgG
Clonality:	Polyclonal
Immunogen:	peptide from the intermediate residues of human PIWIL1 protein.
Formulation:	Rabbit IgG in Tris-glycine (without Mg <sup>2+</sup> and Ca <sup>2+</sup> ), pH 7.4, containing 0.02% sodium azide and 0.5% BSA.
Concentration:	lot specific
Purification:	Peptide affinity purified
Conjugation:	Unconjugated
Storage:	Store at -20°C as received.
Stability:	Stable for 12 months from date of receipt.
Gene Name:	piwi like RNA-mediated gene silencing 1
Database Link:	<a href="#">NP_004755</a> <a href="#">Entrez Gene 57749 Mouse</a> <a href="#">Entrez Gene 363912 Rat</a> <a href="#">Entrez Gene 9271 Human</a> <a href="#">Q96J94</a>
Synonyms:	CT80.1; HIWI; MIWI; PIWI
Protein Pathways:	Dorso-ventral axis formation



[View online »](#)

**Product images:**

Western blot analysis of fetal and rattus testis lysates with anti-PIWIL1 antibody (1:500).



Immunohistochemical staining of formalin-fixed paraffin-embedded testis showing cytoplasmic staining with anti-PIWIL1 antibody diluted at 1:200.