

Product datasheet for **TA310114**

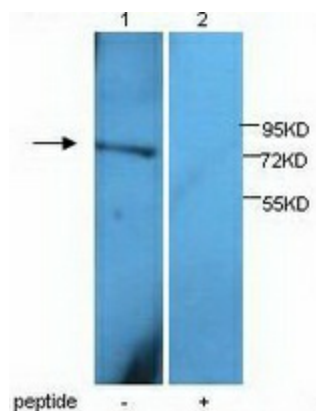
GFM1 Rabbit Polyclonal Antibody

Product data:

| | |
|-----------------------|---|
| Product Type: | Primary Antibodies |
| Applications: | WB |
| Recommended Dilution: | WB: 1:250 |
| Reactivity: | Human, Mouse, Rat |
| Host: | Rabbit |
| Isotype: | IgG |
| Clonality: | Polyclonal |
| Immunogen: | Synthetic peptide conjugated to KLH |
| Formulation: | PBS, pH 7.4 with 0.05% sodium azide. |
| Concentration: | lot specific |
| Purification: | Protein A purified |
| Conjugation: | Unconjugated |
| Storage: | Store at -20°C as received. |
| Stability: | Stable for 12 months from date of receipt. |
| Gene Name: | G elongation factor, mitochondrial 1 |
| Database Link: | NP_079272 Entrez Gene 28030 Mouse Entrez Gene 114017 Rat Entrez Gene 85476 Human Q96RP9 |
| Synonyms: | COXPD1; EFG; EFG1; EFGM; EGF1; GFM; hEFG1 |



[View online »](#)

Product images:

Western blot analysis of HeLa cell lysates with anti-GFM1 antibody (1:250). This antibody identified a band of ~76kDa in HeLa cell lysates. This band can be specifically blocked by peptide PT00163.