

Product datasheet for **TA310113**

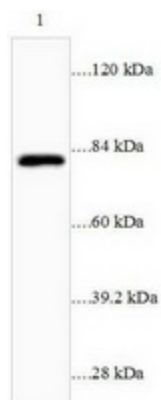
EGR1 Rabbit Polyclonal Antibody

Product data:

Product Type:	Primary Antibodies
Applications:	WB
Recommended Dilution:	WB: 1:500~1:1000
Reactivity:	Human
Host:	Rabbit
Isotype:	IgG
Clonality:	Polyclonal
Immunogen:	Synthetic peptide derived from Human Egr1.
Formulation:	PBS, pH 7.4 with 0.02% sodium azide.
Concentration:	lot specific
Purification:	Affinity purified
Conjugation:	Unconjugated
Storage:	Store at -20°C as received.
Stability:	Stable for 12 months from date of receipt.
Gene Name:	early growth response 1
Database Link:	NP_001955 Entrez Gene 1958 Human P18146
Synonyms:	AT225; G0S30; KROX-24; NGFI-A; TIS8; ZIF-268; ZNF225
Protein Families:	Druggable Genome
Protein Pathways:	Prion diseases



[View online »](#)

Product images:

Western blot analysis of mouse brain lysate (95ug cell lysate) with anti-EGR1 antibody diluted at 1:2000. (Predicted band size: 58kDa; observed band size: 82kDa)