

Product datasheet for **TA310111**

DGCR8 Rabbit Polyclonal Antibody

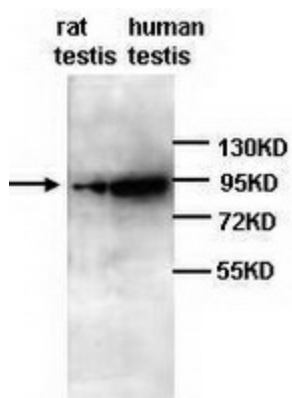
Product data:

Product Type:	Primary Antibodies
Applications:	WB
Recommended Dilution:	WB: 1:250
Reactivity:	Human, Rat
Host:	Rabbit
Isotype:	IgG
Clonality:	Polyclonal
Immunogen:	Synthetic peptide conjugated to KLH
Formulation:	PBS, pH 7.4 with 0.02% sodium azide.
Concentration:	lot specific
Purification:	Affinity purified
Conjugation:	Unconjugated
Storage:	Store at -20°C as received.
Stability:	Stable for 12 months from date of receipt.
Gene Name:	DGCR8 microprocessor complex subunit
Database Link:	NP_073557 Entrez Gene 287954 Rat Entrez Gene 54487 Human Q8WYQ5
Synonyms:	C22orf12; DGCRK6; Gy1; pasha



[View online »](#)

Product images:



Western blot analysis of rat and human testis lysates with anti-DGCR8 antibody (1:500).