

Product datasheet for **TA310110**

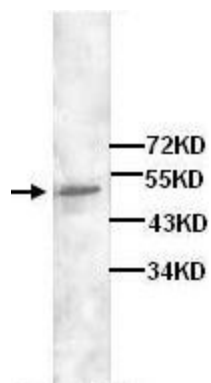
DCP2 Rabbit Polyclonal Antibody

Product data:

Product Type:	Primary Antibodies
Applications:	WB
Recommended Dilution:	WB: 1:250
Reactivity:	Human, Mouse, Rat
Host:	Rabbit
Isotype:	IgG
Clonality:	Polyclonal
Immunogen:	Synthetic peptide conjugated to KLH
Formulation:	Rabbit IgG in phosphate buffered saline (without Mg ²⁺ and Ca ²⁺), pH 7.4, 150mM NaCl, 0.02% sodium azide and 50% glycerol.
Concentration:	lot specific
Purification:	Affinity purified
Conjugation:	Unconjugated
Storage:	Store at -20°C as received.
Stability:	Stable for 12 months from date of receipt.
Gene Name:	decapping mRNA 2
Database Link:	NP_689837 Entrez Gene 70640 Mouse Entrez Gene 291604 Rat Entrez Gene 167227 Human Q8IU60
Synonyms:	NUDT20
Protein Pathways:	RNA degradation



[View online »](#)

Product images:

Western blot analysis of Jurkat cell lysates with anti-Dcp2 antibody (1:200).