

## Product datasheet for **TA310109**

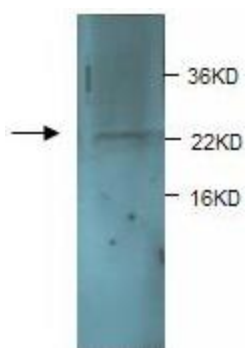
### CNTF Rabbit Polyclonal Antibody

#### Product data:

Product Type:	Primary Antibodies
Applications:	WB
Recommended Dilution:	WB: 1:1000
Reactivity:	Human
Host:	Rabbit
Isotype:	IgG
Clonality:	Polyclonal
Immunogen:	Synthetic peptide conjugated to KLH
Formulation:	PBS, pH 7.4 with 0.05% sodium azide.
Concentration:	lot specific
Purification:	Protein A purified
Conjugation:	Unconjugated
Storage:	Store at -20°C as received.
Stability:	Stable for 12 months from date of receipt.
Gene Name:	ciliary neurotrophic factor
Database Link:	<a href="#">NP_000605</a> <a href="#">Entrez Gene 1270 Human P26441</a>
Synonyms:	HCNTF
Protein Families:	Druggable Genome
Protein Pathways:	Cytokine-cytokine receptor interaction, Jak-STAT signaling pathway



[View online »](#)

**Product images:**

Western blot analysis of fetal brain lysates with anti-CNTF antibody (1:1000). This antibody identified a band of ~24kDa.