

Product datasheet for **TA310108**

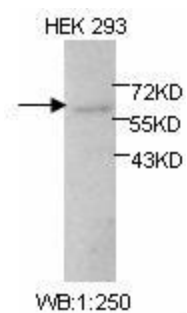
CBX4 Rabbit Polyclonal Antibody

Product data:

Product Type:	Primary Antibodies
Applications:	WB
Recommended Dilution:	WB: 1:250
Reactivity:	Human
Host:	Rabbit
Isotype:	IgG
Clonality:	Polyclonal
Immunogen:	Synthetic peptide conjugated to KLH
Formulation:	PBS, pH 7.4 with 0.05% sodium azide.
Concentration:	lot specific
Purification:	Purified
Conjugation:	Unconjugated
Storage:	Store at -20°C as received.
Stability:	Stable for 12 months from date of receipt.
Gene Name:	chromobox 4
Database Link:	NP_003646 Entrez Gene 8535 Human O00257
Synonyms:	NBP16; PC2
Protein Families:	Druggable Genome, Transcription Factors



[View online »](#)

Product images:

Western blot analysis of HEK293 cell lysates with anti-CBX4 antibody diluted at 1:250.