

Product datasheet for **TA310107**

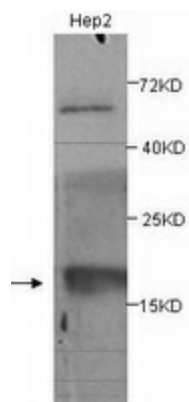
BTG2 Rabbit Polyclonal Antibody

Product data:

Product Type:	Primary Antibodies
Applications:	WB
Recommended Dilution:	WB: 1:250
Reactivity:	Human
Host:	Rabbit
Isotype:	IgG
Clonality:	Polyclonal
Immunogen:	Synthetic peptide conjugated to KLH
Formulation:	PBS, pH 7.4 with 0.05% sodium azide.
Concentration:	lot specific
Purification:	Purified
Conjugation:	Unconjugated
Storage:	Store at -20°C as received.
Stability:	Stable for 12 months from date of receipt.
Gene Name:	BTG family member 2
Database Link:	NP_006754 Entrez Gene 7832 Human P78543
Synonyms:	APRO1; PC3; TIS21
Protein Families:	Transcription Factors



[View online »](#)

Product images:

Western blot analysis of Hep-2 lysates with anti-BTG2 antibody (1:250). This antibody identified a band of ~17kDa. The upper bands were non-specific for loading controls.