

## Product datasheet for **TA310105**

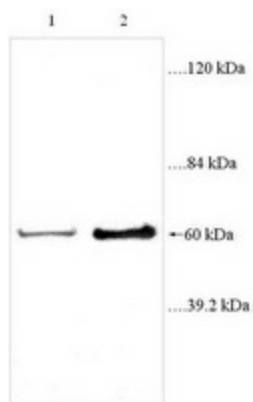
### **BCL3 Rabbit Polyclonal Antibody**

#### **Product data:**

Product Type:	Primary Antibodies
Applications:	WB
Recommended Dilution:	WB: 1:500~1:1000
Reactivity:	Human
Host:	Rabbit
Isotype:	IgG
Clonality:	Polyclonal
Immunogen:	Synthetic peptides, corresponding to amino acids 2-13 and 107-120 of Human Bcl3.
Formulation:	PBS, pH 7.4 with 0.02% sodium azide.
Concentration:	lot specific
Purification:	Affinity purified
Conjugation:	Unconjugated
Storage:	Store at -20°C as received.
Stability:	Stable for 12 months from date of receipt.
Gene Name:	B-cell CLL/lymphoma 3
Database Link:	<a href="#">NP_005169</a> <a href="#">Entrez Gene 602 Human</a> <a href="#">P20749</a>
Synonyms:	BCL4; D19S37
Protein Families:	Druggable Genome, Transcription Factors



[View online »](#)

**Product images:**

Western blot analysis of Jurkat cells (Lane 1: 20ug and Lane 2: 40ug cell lysate) with anti-BCL3 antibody.