

Product datasheet for **TA310104**

ARFIP2 Rabbit Polyclonal Antibody

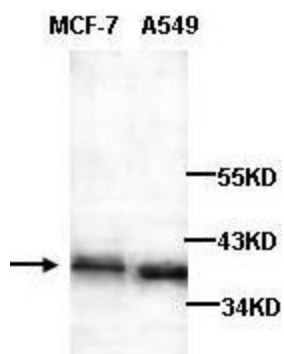
Product data:

Product Type:	Primary Antibodies
Applications:	WB
Recommended Dilution:	WB: 1:500~1:1000
Reactivity:	Human, Mouse, Rat
Host:	Rabbit
Isotype:	IgG
Clonality:	Polyclonal
Immunogen:	Synthetic peptide conjugated to KLH
Formulation:	Rabbit IgG in phosphate buffered saline (without Mg ²⁺ and Ca ²⁺), pH 7.4, 150mM NaCl, 0.02% sodium azide and 50% glycerol.
Concentration:	lot specific
Purification:	Affinity purified
Conjugation:	Unconjugated
Storage:	Store at -20°C as received.
Stability:	Stable for 12 months from date of receipt.
Gene Name:	ADP ribosylation factor interacting protein 2
Database Link:	NP_036534 Entrez Gene 76932 Mouse Entrez Gene 293344 Rat Entrez Gene 23647 Human P53365
Synonyms:	POR1
Protein Families:	Druggable Genome



[View online »](#)

Product images:



Western blot analysis of MCF-7 and A549 cell lysates with anti-ARFIP2 antibody (1:200).