

Product datasheet for **TA310103**

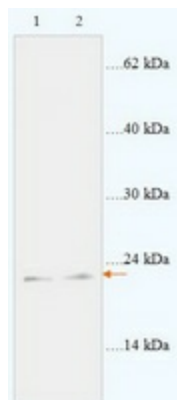
APOBEC3C Rabbit Polyclonal Antibody

Product data:

Product Type:	Primary Antibodies
Applications:	WB
Recommended Dilution:	WB: 1:500~1:1000
Reactivity:	Human
Host:	Rabbit
Isotype:	IgG
Clonality:	Polyclonal
Immunogen:	Synthetic peptide derived from Human APOBEC3C.
Formulation:	PBS, pH 7.4 with 0.02% sodium azide.
Concentration:	lot specific
Purification:	Affinity purified
Conjugation:	Unconjugated
Storage:	Store at -20°C as received.
Stability:	Stable for 12 months from date of receipt.
Gene Name:	apolipoprotein B mRNA editing enzyme catalytic subunit 3C
Database Link:	NP_055323 Entrez Gene 27350 Human Q9NRW3
Synonyms:	A3C; APOBEC1L; ARDC2; ARDC4; ARP5; bK150C2.3; PBI



[View online »](#)

Product images:

Western blot analysis of IM9 cells (Lane 1: 48ug lysate) and ECL cells (Lane 2: 50ug lysate) with anti-APOBEC3C antibody diluted at 1:1000. (Predicted and observed size: 23kDa)