

## Product datasheet for **TA310102**

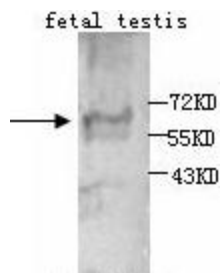
### AMH Rabbit Polyclonal Antibody

#### Product data:

Product Type:	Primary Antibodies
Applications:	WB
Recommended Dilution:	WB: 1:500
Reactivity:	Human
Host:	Rabbit
Isotype:	IgG
Clonality:	Polyclonal
Immunogen:	Synthetic peptide conjugated to KLH
Formulation:	PBS, pH 7.4 with 0.05% sodium azide.
Concentration:	lot specific
Purification:	Protein A purified
Conjugation:	Unconjugated
Storage:	Store at -20°C as received.
Stability:	Stable for 12 months from date of receipt.
Gene Name:	anti-Mullerian hormone
Database Link:	<a href="#">NP_000470</a> <a href="#">Entrez Gene 268 Human</a> <a href="#">P03971</a>
Synonyms:	MIF; MIS
Protein Families:	Druggable Genome, Secreted Protein
Protein Pathways:	Cytokine-cytokine receptor interaction, TGF-beta signaling pathway



[View online »](#)

**Product images:**

Western blot analysis of human fetal testis lysates with anti-AMH antibody (1:1000). This antibody identified a band of ~60kDa in human fetal testis lysates.