

## Product datasheet for **TA310096**

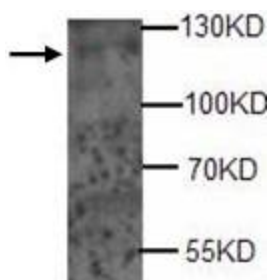
### ADCY2 Rabbit Polyclonal Antibody

#### Product data:

Product Type:	Primary Antibodies
Applications:	WB
Recommended Dilution:	WB: 1:500
Reactivity:	Human
Host:	Rabbit
Isotype:	IgG
Clonality:	Polyclonal
Immunogen:	Synthetic peptide conjugated to KLH
Formulation:	PBS, pH 7.4 with 0.05% sodium azide.
Concentration:	lot specific
Purification:	Purified
Conjugation:	Unconjugated
Storage:	Store at -20°C as received.
Stability:	Stable for 12 months from date of receipt.
Gene Name:	adenylate cyclase 2 (brain)
Database Link:	<a href="#">NP_065433</a> <a href="#">Entrez Gene 108 Human</a> <a href="#">Q08462</a>
Synonyms:	AC2; HBAC2
Protein Families:	Druggable Genome, Transmembrane
Protein Pathways:	Calcium signaling pathway, Chemokine signaling pathway, Dilated cardiomyopathy, Gap junction, GnRH signaling pathway, Melanogenesis, Oocyte meiosis, Progesterone-mediated oocyte maturation, Purine metabolism, Vascular smooth muscle contraction



[View online »](#)

**Product images:**

Western blot analysis of human fetal brain tissue extracts with anti-ADCY2 antibody (1:500). This antibody identified a band of ~125kDa in human fetal brain tissue extracts.