

Product datasheet for **TA310095**

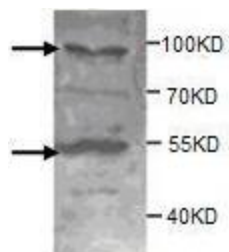
ADAMTS8 Rabbit Polyclonal Antibody

Product data:

Product Type:	Primary Antibodies
Applications:	WB
Recommended Dilution:	WB: 1:500~1:1000
Reactivity:	Human
Host:	Rabbit
Isotype:	IgG
Clonality:	Polyclonal
Immunogen:	Synthetic peptide conjugated to KLH
Formulation:	PBS, pH 7.4 with 0.05% sodium azide.
Concentration:	lot specific
Purification:	Purified
Conjugation:	Unconjugated
Storage:	Store at -20°C as received.
Stability:	Stable for 12 months from date of receipt.
Gene Name:	ADAM metallopeptidase with thrombospondin type 1 motif 8
Database Link:	NP_008968 Entrez Gene 11095 Human Q9UP79
Synonyms:	ADAM-TS8; METH2
Protein Families:	Druggable Genome, Protease, Secreted Protein



[View online »](#)

Product images:

Western blot analysis of extracts from fetal liver using ADAMTS8 antibody diluted at 1:1000.