

Product datasheet for **TA310090**

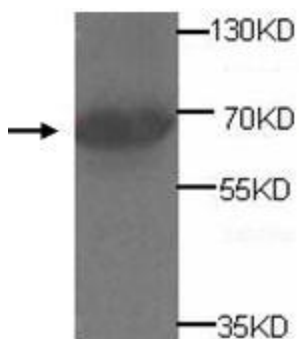
ADAM20 Rabbit Polyclonal Antibody

Product data:

Product Type:	Primary Antibodies
Applications:	WB
Recommended Dilution:	WB: 1:500
Reactivity:	Human
Host:	Rabbit
Isotype:	IgG
Clonality:	Polyclonal
Immunogen:	Synthetic peptide conjugated to KLH
Formulation:	PBS, pH 7.4 with 0.05% sodium azide.
Concentration:	lot specific
Purification:	Purified
Conjugation:	Unconjugated
Storage:	Store at -20°C as received.
Stability:	Stable for 12 months from date of receipt.
Gene Name:	ADAM metallopeptidase domain 20
Database Link:	NP_003805 Entrez Gene 8748 Human O43506
Synonyms:	ADAM metallopeptidase domain 20; a disintegrin and metalloproteinase domain 20
Protein Families:	Druggable Genome, Protease, Transmembrane



[View online »](#)

Product images:

Western blot analysis of human fetal testis lysates with anti-ADAM20 antibody (diluted at 1:500). This antibody identified a band of ~68kDa.