

Product datasheet for **TA310086**

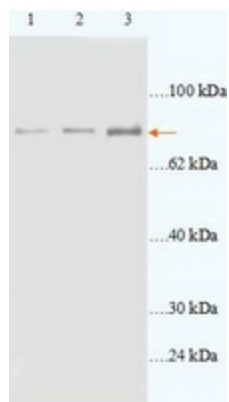
ABCB10 Rabbit Polyclonal Antibody

Product data:

Product Type:	Primary Antibodies
Applications:	WB
Recommended Dilution:	WB: 1:500~1:1000
Reactivity:	Human
Host:	Rabbit
Isotype:	IgG
Clonality:	Polyclonal
Immunogen:	Synthetic peptide derived from Human ABCB10.
Formulation:	PBS, pH 7.4 with 0.02% sodium azide.
Concentration:	lot specific
Purification:	Affinity purified
Conjugation:	Unconjugated
Storage:	Store at -20°C as received.
Stability:	Stable for 12 months from date of receipt.
Gene Name:	ATP binding cassette subfamily B member 10
Database Link:	NP_036221 Entrez Gene 23456 Human Q9NRK6
Synonyms:	EST20237; M-ABC2; MTABC2
Protein Families:	Druggable Genome, Transmembrane
Protein Pathways:	ABC transporters



[View online »](#)

Product images:

Western blot analysis of Jurkat cells (Lane 1: 20ug lysate, Lane 2: 40ug lysate, Lane 3: 60ug lysate) with anti-ABCB10 antibody diluted at 1:2000. (Predicted and observed size: 79kDa)