

## Product datasheet for **TA310084**

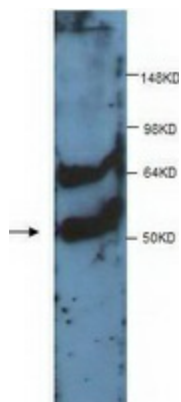
### AAMP Rabbit Polyclonal Antibody

#### Product data:

Product Type:	Primary Antibodies
Applications:	WB
Recommended Dilution:	WB: 1:250
Reactivity:	Human, Mouse, Rat
Host:	Rabbit
Isotype:	IgG
Clonality:	Polyclonal
Immunogen:	Synthetic peptide conjugated to KLH
Formulation:	PBS, pH 7.4 with 0.05% sodium azide.
Concentration:	lot specific
Purification:	Affinity purified
Conjugation:	Unconjugated
Storage:	Store at -20°C as received.
Stability:	Stable for 12 months from date of receipt.
Gene Name:	angio associated migratory cell protein
Database Link:	<a href="#">NP_001078</a> <a href="#">Entrez Gene 227290 Mouse</a> <a href="#">Entrez Gene 301512 Rat</a> <a href="#">Entrez Gene 14 Human Q13685</a>
Synonyms:	angio-associated; migratory cell protein



[View online »](#)

**Product images:**

Western blot analysis of fetal kidney lysates with anti-AAMP antibody (1:250). This antibody identified a band of ~52kDa.