

Product datasheet for **TA310082**

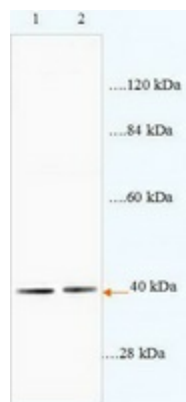
HEXO (ERI1) Rabbit Polyclonal Antibody

Product data:

Product Type:	Primary Antibodies
Applications:	WB
Recommended Dilution:	WB: 1:500~1:1000
Reactivity:	Human, Rat
Host:	Rabbit
Isotype:	IgG
Clonality:	Polyclonal
Immunogen:	Synthetic peptide derived from Human THEX1.
Formulation:	PBS, pH 7.4 with 0.02% sodium azide.
Concentration:	lot specific
Purification:	Affinity purified
Conjugation:	Unconjugated
Storage:	Store at -20°C as received.
Stability:	Stable for 12 months from date of receipt.
Gene Name:	exoribonuclease 1
Database Link:	NP_699163 Entrez Gene 361159 Rat Entrez Gene 90459 Human Q8IV48
Synonyms:	3 HEXO; 3'HEXO; HEXO; THEX1



[View online »](#)

Product images:

Western blot analysis of rat brain lysate (Lanes 1 and 2: 84ug lysate) with anti-THEX1 antibody diluted at 1:1000. (Predicted and observed size: 40kDa)