

## Product datasheet for **TA310081**

### TGF beta 1 (TGFB1) Rabbit Polyclonal Antibody

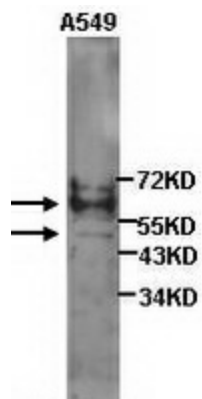
#### Product data:

Product Type:	Primary Antibodies
Applications:	IHC, WB
Recommended Dilution:	WB: 1:500~1:1000, IHC: 1:50~1:100
Reactivity:	Human, Mouse, Rat
Host:	Rabbit
Isotype:	IgG
Clonality:	Polyclonal
Immunogen:	peptide coupled to KLH
Formulation:	Rabbit IgG containing 0.02% sodium azide
Concentration:	lot specific
Purification:	Protein A purified
Conjugation:	Unconjugated
Storage:	Store at -20°C as received.
Stability:	Stable for 12 months from date of receipt.
Gene Name:	transforming growth factor beta 1
Database Link:	<a href="#">NP_000651</a> <a href="#">Entrez Gene 21803 Mouse</a> <a href="#">Entrez Gene 59086 Rat</a> <a href="#">Entrez Gene 7040 Human</a> <a href="#">P01137</a>
Synonyms:	CED; DPD1; LAP; TGFB; TGFbeta
Protein Families:	Druggable Genome, ES Cell Differentiation/IPS, Secreted Protein, Transcription Factors
Protein Pathways:	Cell cycle, Chronic myeloid leukemia, Colorectal cancer, Cytokine-cytokine receptor interaction, Dilated cardiomyopathy, Hypertrophic cardiomyopathy (HCM), MAPK signaling pathway, Pancreatic cancer, Pathways in cancer, Renal cell carcinoma, TGF-beta signaling pathway

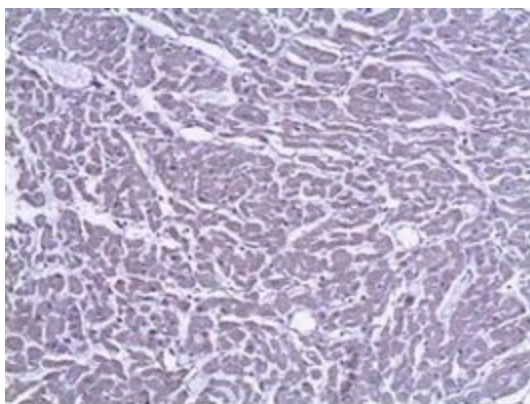


[View online »](#)

## Product images:



Western blot analysis of A549 cell lysates with anti-TGF beta1 antibody (1:500).



Immunohistochemical staining of formalin-fixed paraffin-embedded heart showing cytoplasmic staining with anti-TGF beta1 antibody diluted at 1:100.