

Product datasheet for **TA310080**

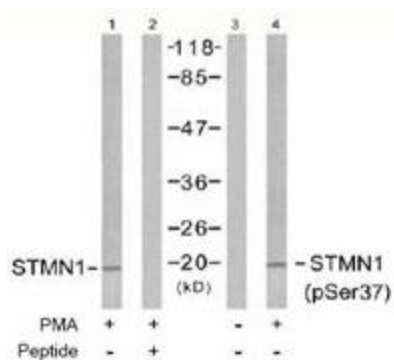
Stathmin 1 (STMN1) Rabbit Polyclonal Antibody

Product data:

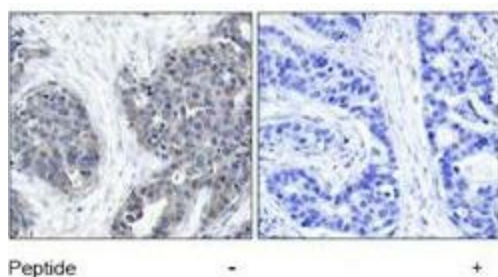
| | |
|-----------------------|---|
| Product Type: | Primary Antibodies |
| Applications: | IHC, WB |
| Recommended Dilution: | WB: 1:500~1:1000, IHC: 1:50~1:100 |
| Reactivity: | Human, Mouse, Rat |
| Host: | Rabbit |
| Isotype: | IgG |
| Clonality: | Polyclonal |
| Immunogen: | The antiserum was produced against synthesized non-phosphopeptide derived from human Stathmin 1 around the phosphorylation site of serine 37 (P-L-SP-P-P). |
| Formulation: | phosphate buffered saline (without Mg ²⁺ and Ca ²⁺), pH 7.4, 150mM NaCl, 0.02% sodium azide and 50% glycerol. |
| Concentration: | lot specific |
| Purification: | The antibody was affinity-purified from rabbit antiserum by affinity-chromatography using epitope-specific immunogen. |
| Conjugation: | Unconjugated |
| Storage: | Store at -20°C as received. |
| Stability: | Stable for 12 months from date of receipt. |
| Gene Name: | stathmin 1 |
| Database Link: | NP_981946 Entrez Gene 16765 Mouse Entrez Gene 29332 Rat Entrez Gene 3925 Human P16949 |
| Synonyms: | C1orf215; Lag; LAP18; OP18; PP17; PP19; PR22; SMN |
| Protein Pathways: | MAPK signaling pathway |



[View online »](#)

Product images:


Western blot analysis of extracts from Jurkat cells untreated or treated with PMA (1ng/ml, 15min), using Stathmin 1 antibody (Lanes 1 and 2) and Stathmin 1 (phospho-Ser37) antibody (Lanes 3 and 4).



Immunohistochemistry analysis of paraffin-embedded human breast carcinoma tissue using Stathmin 1 antibody.