

Product datasheet for **TA310079**

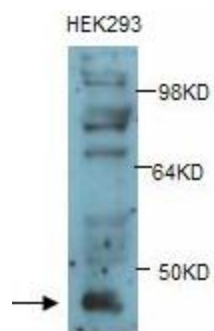
RFP2 (TRIM13) Rabbit Polyclonal Antibody

Product data:

Product Type:	Primary Antibodies
Applications:	WB
Recommended Dilution:	WB: 1:1000
Reactivity:	Human
Host:	Rabbit
Isotype:	IgG
Clonality:	Polyclonal
Immunogen:	Synthetic peptide conjugated to KLH
Formulation:	PBS, pH 7.4 with 0.05% sodium azide.
Concentration:	lot specific
Purification:	Protein A purified
Conjugation:	Unconjugated
Storage:	Store at -20°C as received.
Stability:	Stable for 12 months from date of receipt.
Gene Name:	tripartite motif containing 13
Database Link:	NP_434698 Entrez Gene 10206 Human O60858
Synonyms:	CAR; DLEU5; LEU5; RFP2; RNF77
Protein Families:	Transmembrane



[View online »](#)

Product images:

Western blot analysis of HEK293 cell lysates with anti-RFP2 antibody (1:1000). This antibody identified a band of ~45kDa.