

Product datasheet for **TA310075**

PDGFC Rabbit Polyclonal Antibody

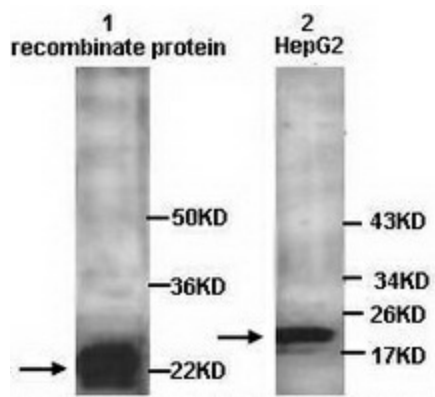
Product data:

Product Type:	Primary Antibodies
Applications:	WB
Recommended Dilution:	WB: 1:500
Reactivity:	Human, Mouse
Host:	Rabbit
Isotype:	IgG
Clonality:	Polyclonal
Immunogen:	peptide coupled to KLH
Formulation:	Rabbit IgG in phosphate buffered saline (without Mg ²⁺ and Ca ²⁺), pH 7.4, 150mM NaCl, 0.02% sodium azide and 50% glycerol.
Concentration:	lot specific
Purification:	Purified
Conjugation:	Unconjugated
Storage:	Store at -20°C as received.
Stability:	Stable for 12 months from date of receipt.
Gene Name:	platelet derived growth factor C
Database Link:	NP_057289 Entrez Gene 54635 Mouse Entrez Gene 56034 Human Q9NRA1
Synonyms:	FALLOTEIN; SCDGF
Protein Families:	Adult stem cells, Druggable Genome, Embryonic stem cells, ES Cell Differentiation/IPS, Induced pluripotent stem cells
Protein Pathways:	Cytokine-cytokine receptor interaction, Focal adhesion, Gap junction, Melanoma, Prostate cancer, Regulation of actin cytoskeleton



[View online »](#)

Product images:



Western blot analysis of recombinant protein and HepG2 cell lysates with anti-PDGFC antibody (1:500).