

Product datasheet for **TA310073**

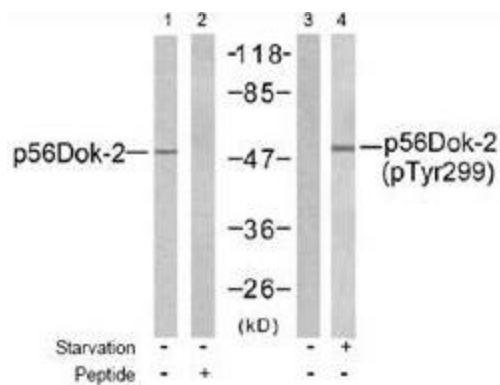
DOK2 Rabbit Polyclonal Antibody

Product data:

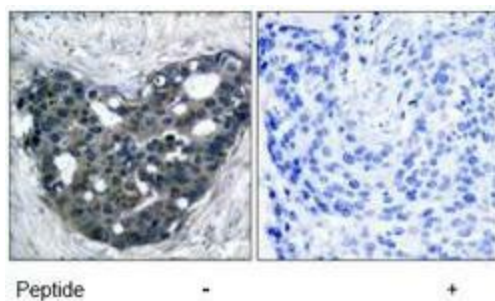
Product Type:	Primary Antibodies
Applications:	IHC, WB
Recommended Dilution:	WB: 1:500~1:1000, IHC: 1:50~1:100
Reactivity:	Human
Host:	Rabbit
Isotype:	IgG
Clonality:	Polyclonal
Immunogen:	The antiserum was produced against synthesized non-phosphopeptide derived from human p56Dok-2 around the phosphorylation site of tyrosine 299 (G-E-YP-A-V).
Formulation:	phosphate buffered saline (without Mg ²⁺ and Ca ²⁺), pH 7.4, 150mM NaCl, 0.02% sodium azide and 50% glycerol.
Concentration:	lot specific
Purification:	The antibody was affinity-purified from rabbit antiserum by affinity-chromatography using epitope-specific immunogen.
Conjugation:	Unconjugated
Storage:	Store at -20°C as received.
Stability:	Stable for 12 months from date of receipt.
Gene Name:	docking protein 2
Database Link:	NP_003965 Entrez Gene 9046 Human O60496
Synonyms:	p56DOK; p56dok-2
Protein Families:	Druggable Genome



[View online »](#)

Product images:


Western blot analysis of extracts from K562 cells, using p56Dok-2 antibody (Lanes 1 and 2) and p56Dok-2 (phospho-Tyr299) antibody (Lanes 3 and 4).



Immunohistochemistry analysis of paraffin-embedded human breast carcinoma tissue using p56Dok-2 antibody.