

Product datasheet for **TA310072**

Ncf1 Rabbit Polyclonal Antibody

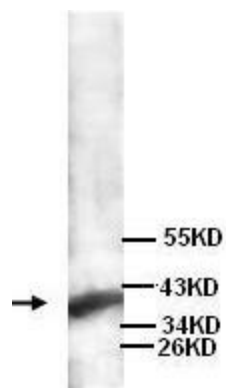
Product data:

Product Type:	Primary Antibodies
Applications:	WB
Recommended Dilution:	WB: 1:200~500, ELISA: 1:5000~20,000
Reactivity:	Mouse, Rat
Host:	Rabbit
Isotype:	IgG
Clonality:	Polyclonal
Immunogen:	Synthetic peptide conjugated to KLH
Formulation:	Rabbit IgG in phosphate buffered saline (without Mg ²⁺ and Ca ²⁺), pH 7.4, 150mM NaCl, 0.02% sodium azide and 50% glycerol.
Concentration:	lot specific
Purification:	Affinity purified
Conjugation:	Unconjugated
Storage:	Store at -20°C as received.
Stability:	Stable for 12 months from date of receipt.
Gene Name:	neutrophil cytosolic factor 1
Database Link:	NP_035006 Entrez Gene 114553 Rat Entrez Gene 17969 Mouse Q09014
Synonyms:	FLJ79451; NCF-1; NCF-47K; NCF1A; NOXO2; p47-phox; p47phox; SH3PXD1A



[View online »](#)

Product images:



Western blot analysis of Raji cell lysates with anti-p47phox antibody (1:200).