

Product datasheet for **TA310071**

p21 (CDKN1A) Rabbit Polyclonal Antibody

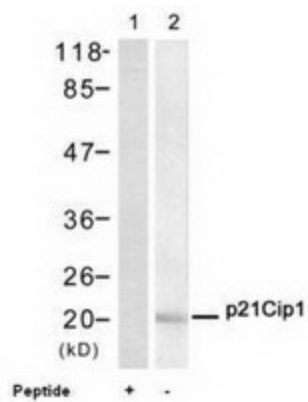
Product data:

Product Type:	Primary Antibodies
Applications:	WB
Recommended Dilution:	WB: 1:500~1:1000
Reactivity:	Human
Host:	Rabbit
Isotype:	IgG
Clonality:	Polyclonal
Immunogen:	The antibody was produced against synthesized non-phosphopeptide derived from human p21Cip1 around the phosphorylation site of threonine 145 (R-Q-TP-S-M).
Formulation:	Rabbit IgG in phosphate buffered saline (without Mg ²⁺ and Ca ²⁺), pH 7.4, 150mM NaCl, 0.02% sodium azide and 50% glycerol.
Concentration:	lot specific
Purification:	Affinity purified
Conjugation:	Unconjugated
Storage:	Store at -20°C as received.
Stability:	Stable for 12 months from date of receipt.
Gene Name:	cyclin-dependent kinase inhibitor 1A
Database Link:	NP_510867 Entrez Gene 1026 Human P38936
Synonyms:	CAP20; CDKN1; CIP1; MDA-6; P21; p21CIP1; SDI1; WAF1
Protein Families:	Druggable Genome
Protein Pathways:	Bladder cancer, Cell cycle, Chronic myeloid leukemia, ErbB signaling pathway, Glioma, Melanoma, p53 signaling pathway, Pathways in cancer, Prostate cancer



[View online »](#)

Product images:



Western blot analysis of extracts from HeLa cells using p21Cip1 antibody.