

Product datasheet for **TA310070**

NIBAN1 Rabbit Polyclonal Antibody

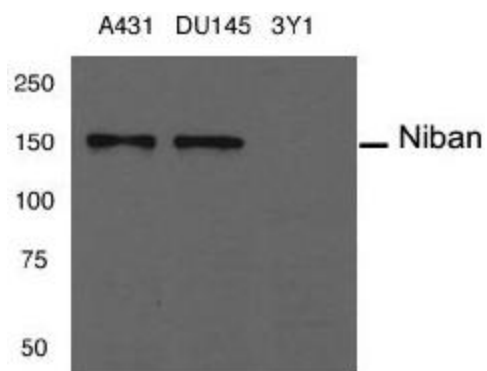
Product data:

Product Type:	Primary Antibodies
Applications:	WB
Recommended Dilution:	WB: 1:500~1:1000
Reactivity:	Human
Host:	Rabbit
Isotype:	IgG
Clonality:	Polyclonal
Immunogen:	The antiserum was produced against a synthesized peptide Corresponding to the 908-920 amino-acid sequence from human niban protein (-KDDVKEGEGGQES-).
Formulation:	phosphate buffered saline (without Mg ²⁺ and Ca ²⁺), pH 7.4, 150mM NaCl, 0.02% sodium azide and 50% glycerol.
Concentration:	lot specific
Purification:	The antibody was affinity-purified from rabbit antiserum by affinity-chromatography using epitope-specific immunogen.
Conjugation:	Unconjugated
Storage:	Store at -20°C as received.
Stability:	Stable for 12 months from date of receipt.
Gene Name:	family with sequence similarity 129 member A
Database Link:	NP_443198 Entrez Gene 116496 Human Q9BZQ8
Synonyms:	C1orf24; GIG39; NIBAN



[View online »](#)

Product images:



Western blot analysis of extracts from human A431, DU145 cancer cells and rat 3Y1 fibroblast cells, using Niban antibody