

## Product datasheet for **TA310068**

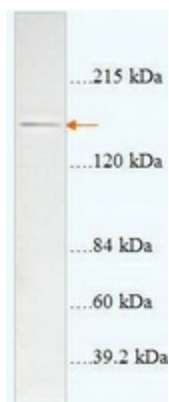
### Nestin (NES) Rabbit Polyclonal Antibody

#### Product data:

Product Type:	Primary Antibodies
Applications:	WB
Recommended Dilution:	WB: 1:500~1:1000
Reactivity:	Human, Mouse, Rat
Host:	Rabbit
Isotype:	IgG
Clonality:	Polyclonal
Immunogen:	Synthetic peptide derived from Human Nestin
Formulation:	PBS, pH 7.4 with 0.02% sodium azide.
Concentration:	lot specific
Purification:	Affinity purified
Conjugation:	Unconjugated
Storage:	Store at -20°C as received.
Stability:	Stable for 12 months from date of receipt.
Gene Name:	nestin
Database Link:	<a href="#">NP_006608</a> <a href="#">Entrez Gene 18008 Mouse</a> <a href="#">Entrez Gene 25491 Rat</a> <a href="#">Entrez Gene 10763 Human</a> <a href="#">P48681</a>
Synonyms:	Nbla00170
Protein Families:	ES Cell Differentiation/IPS



[View online »](#)

**Product images:**

Western blot analysis of SGC cells (30ug lysate) with anti-Nestin antibody diluted at 1:1000. (Predicted and observed size: ~170kDa)