

Product datasheet for **TA310067**

MTOR Rabbit Polyclonal Antibody

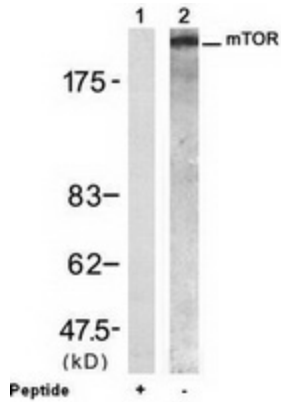
Product data:

Product Type:	Primary Antibodies
Applications:	IHC, WB
Recommended Dilution:	WB: 1:500~1:1000, IHC: 1:50~1:100, IF:1:100~1:200
Reactivity:	Human, Mouse, Rat
Host:	Rabbit
Isotype:	IgG
Clonality:	Polyclonal
Immunogen:	The antibody was produced against synthesized non-phosphopeptide derived from human mTOR around the phosphorylation site of serine 2448 (T-D-SP-Y-S).
Formulation:	Rabbit IgG in phosphate buffered saline (without Mg ²⁺ and Ca ²⁺), pH 7.4, 150mM NaCl, 0.02% sodium azide and 50% glycerol.
Concentration:	lot specific
Purification:	Affinity purified
Conjugation:	Unconjugated
Storage:	Store at -20°C as received.
Stability:	Stable for 12 months from date of receipt.
Gene Name:	mechanistic target of rapamycin
Database Link:	NP_004949 Entrez Gene 56717 Mouse Entrez Gene 56718 Rat Entrez Gene 2475 Human P42345
Synonyms:	FRAP; FRAP1; FRAP2; RAFT1; RAPT1; SKS
Protein Families:	Druggable Genome, Protein Kinase
Protein Pathways:	Acute myeloid leukemia, Adipocytokine signaling pathway, ErbB signaling pathway, Glioma, Insulin signaling pathway, mTOR signaling pathway, Pathways in cancer, Prostate cancer, Type II diabetes mellitus



[View online »](#)

Product images:



Western blot analysis of extracts from 293 cells using mTOR antibody.

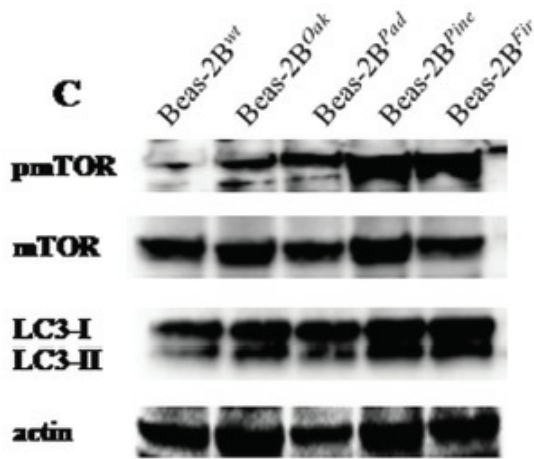
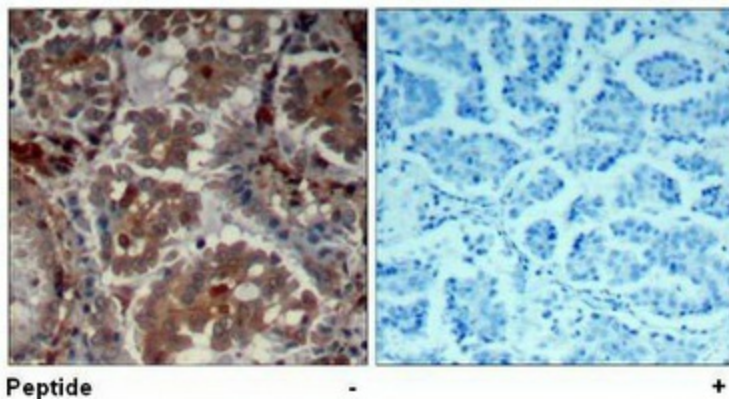


Figure from citation: Western blot analysis of phosphorylated-mTOR (pmTOR), mTOR, LC3-I and LC3-II protein levels by using anti-MTOR phospho, anti-MTOR and anti-MAP1LC3B antibody in wild-type and wood dust-initiated Beas-2B cells. [View Citation](#)



Immunohistochemistry analysis of paraffin-embedded human lung carcinoma tissue using mTOR antibody.