

Product datasheet for **TA310065**

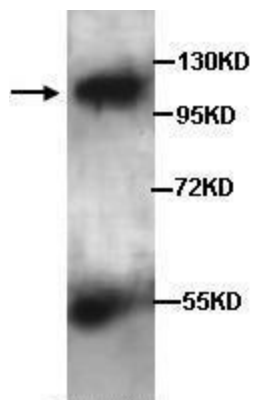
M Cadherin (CDH15) Rabbit Polyclonal Antibody

Product data:

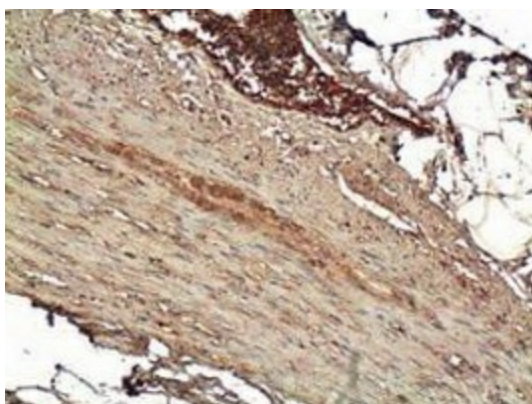
Product Type:	Primary Antibodies
Applications:	IHC, WB
Recommended Dilution:	WB: 1:500
Reactivity:	Human
Host:	Rabbit
Isotype:	IgG
Clonality:	Polyclonal
Immunogen:	peptide from the intermediate residues of human M-cadherin protein.
Formulation:	Rabbit IgG in Tris-glycine (without Mg ²⁺ and Ca ²⁺), pH 7.4, containing 0.02% sodium azide and 0.5% BSA.
Concentration:	lot specific
Purification:	Peptide affinity purified
Conjugation:	Unconjugated
Storage:	Store at -20°C as received.
Stability:	Stable for 12 months from date of receipt.
Gene Name:	cadherin 15
Database Link:	NP_004924 Entrez Gene 1013 Human P55291
Synonyms:	CDH3; CDH14; CDHM; MCAD; MRD3
Protein Families:	Transmembrane
Protein Pathways:	Cell adhesion molecules (CAMs)



[View online »](#)

Product images:

Western blot analysis of fetal muscle lysates with anti-M-cadherin antibody (1:500).



Immunohistochemical staining of formalin-fixed paraffin-embedded smooth muscle tissue showing cytoplasmic and nucleus staining with anti-M-cadherin antibody diluted at 1:100.