

Product datasheet for **TA310064**

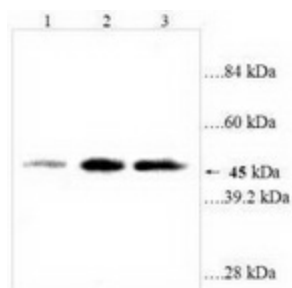
EDG2 (LPAR1) Rabbit Polyclonal Antibody

Product data:

Product Type:	Primary Antibodies
Applications:	WB
Recommended Dilution:	WB: 1:500~1:1000
Reactivity:	Human
Host:	Rabbit
Isotype:	IgG
Clonality:	Polyclonal
Immunogen:	Human LPA 1 amino acids 342-359
Formulation:	PBS, pH 7.4 with 0.02% sodium azide.
Concentration:	lot specific
Purification:	Affinity purified
Conjugation:	Unconjugated
Storage:	Store at -20°C as received.
Stability:	Stable for 12 months from date of receipt.
Gene Name:	lysophosphatidic acid receptor 1
Database Link:	NP_476500 Entrez Gene 1902 Human Q92633
Synonyms:	edg-2; EDG2; Gpcr26; GPR26; LPA1; Mrec1.3; rec.1.3; vzg-1; VZG1
Protein Families:	Druggable Genome, GPCR, Transmembrane
Protein Pathways:	Gap junction, Neuroactive ligand-receptor interaction



[View online »](#)

Product images:

Lane 1: Jurkat cell lysate(38 µg)
Lane 2: SGC-7901 cell lysate(48 µg)
Lane 3: ECL cell lysate(36 µg)
LPA1 41~50 kDa

Western blot analysis of Jurkat cell, SGC-7901 cell and ECL cell lysates with anti-LPAR1 antibody (1:500).