

## Product datasheet for **TA310062**

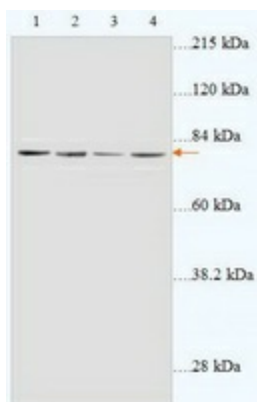
### Leukotriene B4 Receptor (LTB4R) Rabbit Polyclonal Antibody

#### Product data:

Product Type:	Primary Antibodies
Applications:	WB
Recommended Dilution:	WB: 1:500~1:1000
Reactivity:	Human, Bovine
Host:	Rabbit
Isotype:	IgG
Clonality:	Polyclonal
Immunogen:	Synthetic peptide derived from Human BLT1 Receptor.
Formulation:	PBS, pH 7.4 with 0.02% sodium azide.
Concentration:	lot specific
Purification:	Affinity purified
Conjugation:	Unconjugated
Storage:	Store at -20°C as received.
Stability:	Stable for 12 months from date of receipt.
Gene Name:	leukotriene B4 receptor
Database Link:	<a href="#">NP_858043</a> <a href="#">Entrez Gene 1241 Human</a> <a href="#">Q15722</a>
Synonyms:	BLT1; BLTR; CMKRL1; GPR16; LTB4R1; LTBR1; P2RY7; P2Y7
Protein Families:	Druggable Genome, GPCR, Transmembrane
Protein Pathways:	Neuroactive ligand-receptor interaction



[View online »](#)

**Product images:**

Western blot analysis of Jurkat cells (Lanes 1 and 2: 84ug cell lysate) and IM-9 cells (Lane 3: 54ug and Lane 4: 94ug of cell lysate) with anti-BLT1 antibody (1:2000).