

Product datasheet for **TA310059**

JUND Rabbit Polyclonal Antibody

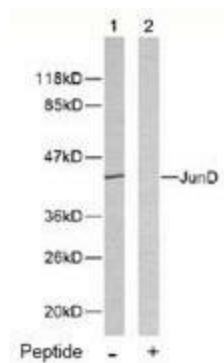
Product data:

Product Type:	Primary Antibodies
Applications:	IHC, WB
Recommended Dilution:	WB: 1:500~1:1000, IHC: 1:50~1:100
Reactivity:	Human, Mouse, Rat
Host:	Rabbit
Isotype:	IgG
Clonality:	Polyclonal
Immunogen:	The antiserum was produced against synthesized non-phosphopeptide derived from humanJunD around the phosphorylation site of serine 255 (G-E-SP-P-P).
Formulation:	phosphate buffered saline (without Mg ²⁺ and Ca ²⁺), pH 7.4, 150mM NaCl, 0.02% sodium azide and 50% glycerol.
Concentration:	lot specific
Purification:	The antibody was affinity-purified from rabbit antiserum by affinity-chromatography usingepitope-specific immunogen.
Conjugation:	Unconjugated
Storage:	Store at -20°C as received.
Stability:	Stable for 12 months from date of receipt.
Gene Name:	JunD proto-oncogene, AP-1 transcription factor subunit
Database Link:	NP_005345 Entrez Gene 16478 MouseEntrez Gene 24518 RatEntrez Gene 3727 Human P17535
Synonyms:	AP-1
Protein Families:	Druggable Genome, Transcription Factors
Protein Pathways:	MAPK signaling pathway

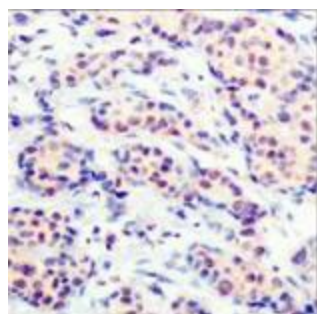


[View online »](#)

Product images:



Western blot analysis of extracts from HeLa cells using JunD antibody.



Immunohistochemistry analysis of paraffin-embedded human breast carcinoma tissue using JunD antibody.