

Product datasheet for **TA310057**

JAK1 Rabbit Polyclonal Antibody

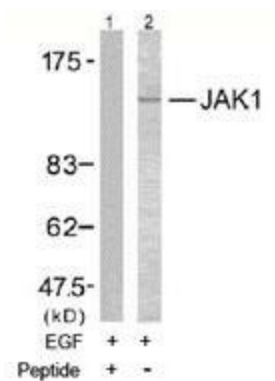
Product data:

Product Type:	Primary Antibodies
Applications:	IHC, WB
Recommended Dilution:	WB: 1:500~1:1000, IHC: 1:50~1:100
Reactivity:	Human, Mouse, Rat
Host:	Rabbit
Isotype:	IgG
Clonality:	Polyclonal
Immunogen:	The antiserum was produced against synthesized phosphopeptide derived from human JAK1 around the phosphorylation site of tyrosine 1022 (K-E-YP-Y-T).
Formulation:	phosphate buffered saline (without Mg ²⁺ and Ca ²⁺), pH 7.4, 150mM NaCl, 0.02% sodium azide and 50% glycerol.
Concentration:	lot specific
Purification:	The antibody was affinity-purified from rabbit antiserum by affinity-chromatography using epitope-specific immunogen.
Conjugation:	Unconjugated
Storage:	Store at -20°C as received.
Stability:	Stable for 12 months from date of receipt.
Gene Name:	Janus kinase 1
Database Link:	NP_002218 Entrez Gene 16451 Mouse Entrez Gene 84598 Rat Entrez Gene 3716 Human P23458
Synonyms:	JAK1A; JAK1B; JTK3
Protein Families:	Druggable Genome, Protein Kinase
Protein Pathways:	Jak-STAT signaling pathway, Pancreatic cancer, Pathways in cancer

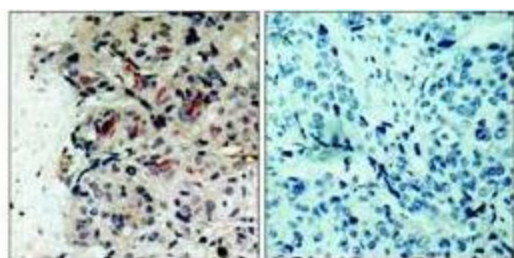


[View online »](#)

Product images:



Western blot analysis of extracts from MCF7 cells using JAK1 antibody.



Peptide - +

Immunohistochemistry analysis of paraffin-embedded human breast carcinoma tissue using JAK1 antibody.