

Product datasheet for **TA310052**

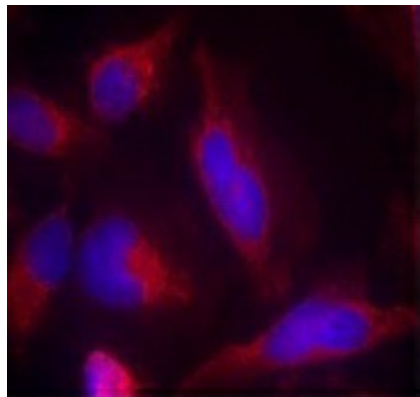
FLT3 Rabbit Polyclonal Antibody

Product data:

Product Type:	Primary Antibodies
Applications:	IF
Recommended Dilution:	IF: 1:100-1:200
Reactivity:	Human
Host:	Rabbit
Isotype:	IgG
Clonality:	Polyclonal
Immunogen:	The antibody was produced against synthesized non-phosphopeptide derived from human FLT3 around the phosphorylation site of tyrosine 591 (Y-F-YP-V-D).
Formulation:	Rabbit IgG in phosphate buffered saline (without Mg ²⁺ and Ca ²⁺), pH 7.4, 150mM NaCl, 0.02% sodium azide and 50% glycerol.
Concentration:	lot specific
Purification:	Affinity purified
Conjugation:	Unconjugated
Storage:	Store at -20°C as received.
Stability:	Stable for 12 months from date of receipt.
Gene Name:	fms related tyrosine kinase 3
Database Link:	NP_004110 Entrez Gene 2322 Human P36888
Synonyms:	CD135; FLK-2; FLK2; STK1
Protein Families:	Druggable Genome, ES Cell Differentiation/IPS, Protein Kinase, Transmembrane
Protein Pathways:	Acute myeloid leukemia, Cytokine-cytokine receptor interaction, Hematopoietic cell lineage, Pathways in cancer



[View online »](#)

Product images:

Immunofluorescence staining of methanol-fixed HeLa cells using FLT3 antibody (red).