

## Product datasheet for **TA310051**

### Ephrin B2 (EFNB2) Rabbit Polyclonal Antibody

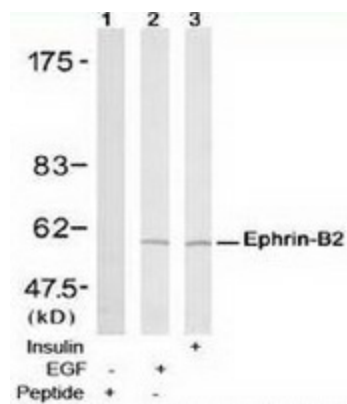
#### Product data:

Product Type:	Primary Antibodies
Applications:	WB
Recommended Dilution:	WB: 1:500~1:1000
Reactivity:	Human, Mouse, Rat
Host:	Rabbit
Isotype:	IgG
Clonality:	Polyclonal
Immunogen:	The antiserum was produced against synthesized non-phosphopeptide derived from human Ephrin-B2 around the phosphorylation site of tyrosine 316 (P-V-YP-I-V).
Formulation:	phosphate buffered saline (without Mg <sup>2+</sup> and Ca <sup>2+</sup> ), pH 7.4, 150mM NaCl, 0.02% sodium azide and 50% glycerol.
Concentration:	lot specific
Purification:	The antibody was affinity-purified from rabbit antiserum by affinity-chromatography using epitope-specific immunogen.
Conjugation:	Unconjugated
Storage:	Store at -20°C as received.
Stability:	Stable for 12 months from date of receipt.
Gene Name:	ephrin B2
Database Link:	<a href="#">NP_004084</a> <a href="#">Entrez Gene 13642 Mouse</a> <a href="#">Entrez Gene 306636 Rat</a> <a href="#">Entrez Gene 1948 Human</a> <a href="#">P52799</a>
Synonyms:	EPLG5; Htk-L; HTKL; LERK5
Protein Families:	Druggable Genome, Transmembrane
Protein Pathways:	Axon guidance



[View online »](#)

## Product images:



Western blot analysis of extracts from HUVEC cells untreated or treated with insulin or EGF, using Ephrin-B2 antibody.