

Product datasheet for **TA310050**

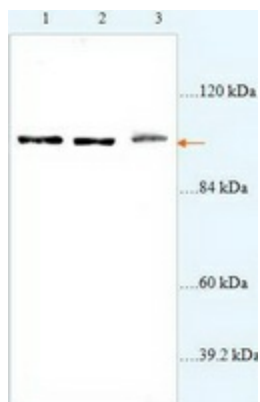
EIF4ENIF1 Rabbit Polyclonal Antibody

Product data:

Product Type:	Primary Antibodies
Applications:	WB
Recommended Dilution:	WB: 1:500~1:1000
Reactivity:	Human
Host:	Rabbit
Isotype:	IgG
Clonality:	Polyclonal
Immunogen:	Synthetic peptide derived from Human EIF4ENIF1.
Formulation:	PBS, pH 7.4 with 0.02% sodium azide.
Concentration:	lot specific
Purification:	Affinity purified
Conjugation:	Unconjugated
Storage:	Store at -20°C as received.
Stability:	Stable for 12 months from date of receipt.
Gene Name:	eukaryotic translation initiation factor 4E nuclear import factor 1
Database Link:	NP_062817 Entrez Gene 56478 Human Q9NRA8
Synonyms:	4E-T; Clast4



[View online »](#)

Product images:

Western blot analysis of Jurkat cells (Lane 1: 72ug lysate), EC9706 (Lane 2: 45ug lysate) and SGC cells (Lane 3: 75ug) with anti-EIF4ENIF1 antibody diluted at 1:2000.