

Product datasheet for **TA310049**

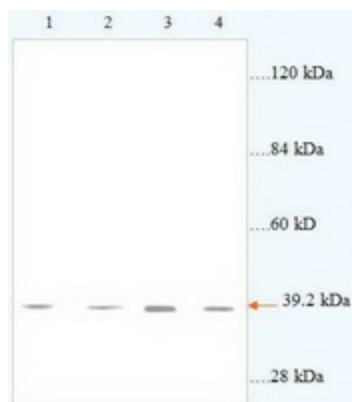
CysLT1 (CYSLTR1) Rabbit Polyclonal Antibody

Product data:

Product Type:	Primary Antibodies
Applications:	WB
Recommended Dilution:	WB: 1:500~1:1000
Reactivity:	Human
Host:	Rabbit
Isotype:	IgG
Clonality:	Polyclonal
Immunogen:	Synthetic peptide derived from Human Cysteinyl Leukotriene Receptor 1.
Formulation:	PBS, pH 7.4 with 0.02% sodium azide.
Concentration:	lot specific
Purification:	Affinity purified
Conjugation:	Unconjugated
Storage:	Store at -20°C as received.
Stability:	Stable for 12 months from date of receipt.
Gene Name:	cysteinyl leukotriene receptor 1
Database Link:	NP_006630 Entrez Gene 10800 Human Q9Y271
Synonyms:	CYSLT1; CYSLT1R; CYSLTR; HMTMF81
Protein Families:	Druggable Genome, GPCR, Transmembrane
Protein Pathways:	Calcium signaling pathway, Neuroactive ligand-receptor interaction



[View online »](#)

Product images:

Western blot analysis of mouse spleen lysate (Lanes 1 and 2: 49ug lysate) and Jurkat cells (Lanes 3 and 4: 54ug lysate) with anti-cysteinyll leukotriene receptor 1 antibody diluted at 1:2000. (Predicted and observed size: 39kDa)