

Product datasheet for **TA310047**

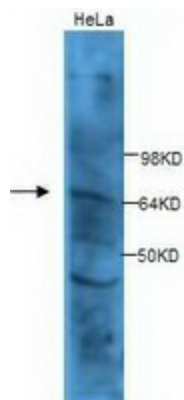
Cyclin A1 (CCNA1) Rabbit Polyclonal Antibody

Product data:

Product Type:	Primary Antibodies
Applications:	WB
Recommended Dilution:	WB: 1:500
Reactivity:	Human, Mouse, Rat
Host:	Rabbit
Isotype:	IgG
Clonality:	Polyclonal
Immunogen:	Synthetic peptide conjugated to KLH
Formulation:	PBS, pH 7.4 with 0.05% sodium azide.
Concentration:	lot specific
Purification:	Protein A purified
Conjugation:	Unconjugated
Storage:	Store at -20°C as received.
Stability:	Stable for 12 months from date of receipt.
Gene Name:	cyclin A1
Database Link:	NP_003905 Entrez Gene 12427 Mouse Entrez Gene 295052 Rat Entrez Gene 8900 Human P78396
Synonyms:	CT146
Protein Families:	Druggable Genome
Protein Pathways:	Acute myeloid leukemia, Cell cycle, Pathways in cancer, Progesterone-mediated oocyte maturation



[View online »](#)

Product images:

Western blot analysis of HeLa cell lysates with anti-Cyclin A1 antibody (1:500). This antibody identified a band of ~65kDa.