

## Product datasheet for **TA310042**

### BRCA1 Rabbit Polyclonal Antibody

#### Product data:

Product Type:	Primary Antibodies
Applications:	IHC, WB
Recommended Dilution:	IHC: 1:50~1:100
Reactivity:	Human
Host:	Rabbit
Isotype:	IgG
Clonality:	Polyclonal
Immunogen:	The antiserum was produced against synthesized non-phosphopeptide derived from humanBRCA1 around the phosphorylation site of serine 1423 (H-G-SP-Q-P).
Formulation:	phosphate buffered saline (without Mg <sup>2+</sup> and Ca <sup>2+</sup> ), pH 7.4, 150mM NaCl, 0.02% sodium azide and 50% glycerol.
Purification:	The antibody was affinity-purified from rabbit antiserum by affinity-chromatography usingepitope-specific immunogen.
Conjugation:	Unconjugated
Storage:	Store at -20°C as received.
Stability:	Stable for 12 months from date of receipt.
Gene Name:	BRCA1, DNA repair associated
Database Link:	<a href="#">NP_009225</a> <a href="#">Entrez Gene 672 Human</a> <a href="#">P38398</a>
Synonyms:	BRCAI; BRCC1; BROVCA1; FANCS; IRIS; PNCA4; PPP1R53; PSCP; RNF53
Protein Families:	Druggable Genome, Transcription Factors
Protein Pathways:	Ubiquitin mediated proteolysis



[View online »](#)

Product images:

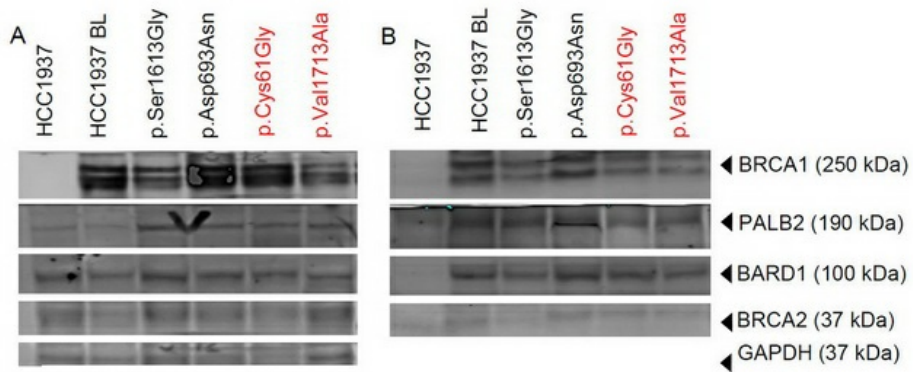
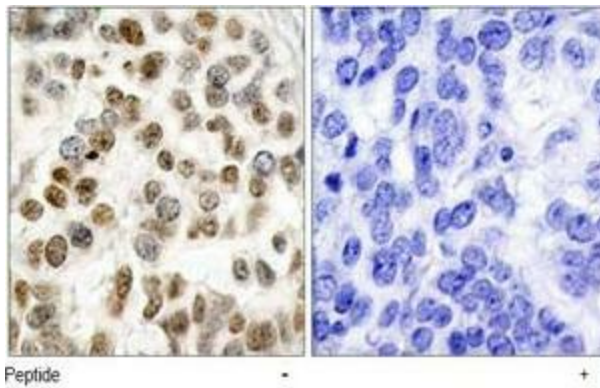


Figure from citation: Co-immunoprecipitation Western blot analysis of proteins from different cell lines using BRCA1 pull-down and probing with anti-BRCA1, PALB2, BARD1, and BRCA2 antibodies. [View Citation](#)



Immunohistochemistry analysis of paraffin-embedded human breast carcinoma tissue using BRCA1 antibody.