

## Product datasheet for **TA310040**

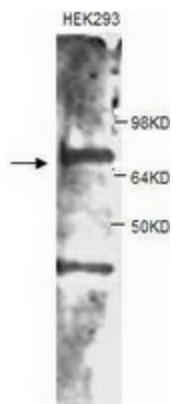
### Annexin VI (ANXA6) Rabbit Polyclonal Antibody

#### Product data:

Product Type:	Primary Antibodies
Applications:	WB
Recommended Dilution:	WB: 1:500
Reactivity:	Human
Host:	Rabbit
Isotype:	IgG
Clonality:	Polyclonal
Immunogen:	Synthetic peptide conjugated to KLH
Formulation:	PBS, pH 7.4 with 0.05% sodium azide.
Concentration:	lot specific
Purification:	Protein A purified
Conjugation:	Unconjugated
Storage:	Store at -20°C as received.
Stability:	Stable for 12 months from date of receipt.
Gene Name:	annexin A6
Database Link:	<a href="#">NP_004024</a> <a href="#">Entrez Gene 309 Human</a> <a href="#">P08133</a>
Synonyms:	annexin A6; annexin VI; annexin VI (p68); ANX6; calcium-binding protein p68; calelectrin; calphobindin II; CBP68



[View online »](#)

**Product images:**

Western blot analysis of HEK293 cell lysates with anti-Annexin VI antibody (1:500). This antibody identified a band of ~75kDa.