

Product datasheet for **TA310039**

Annexin A2 (ANXA2) Rabbit Polyclonal Antibody

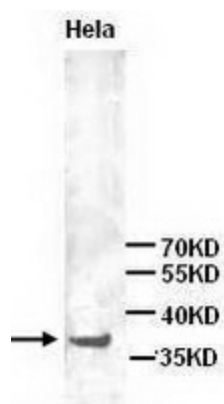
Product data:

Product Type:	Primary Antibodies
Applications:	WB
Recommended Dilution:	WB: 1:1000
Reactivity:	Human, Mouse, Rat
Host:	Rabbit
Isotype:	IgG
Clonality:	Polyclonal
Immunogen:	a 16 amino acid peptide from near the N terminal residues of human Annexin A2 protein
Formulation:	Rabbit IgG in phosphate buffered saline (without Mg ²⁺ and Ca ²⁺), pH 7.4, 150mM NaCl, 0.02% sodium azide and 50% glycerol.
Purification:	Affinity purified
Conjugation:	Unconjugated
Storage:	Store at -20°C as received.
Stability:	Stable for 12 months from date of receipt.
Gene Name:	annexin A2
Database Link:	NP_004030 Entrez Gene 12306 MouseEntrez Gene 56611 RatEntrez Gene 302 Human P07355
Synonyms:	ANX2; ANX2L4; CAL1H; HEL-S-270; LIP2; LPC2; LPC2D; P36; PAP-IV
Protein Families:	Druggable Genome, Secreted Protein, Stem cell - Pluripotency



[View online »](#)

Product images:



Western blot analysis of HeLa cell lysates with anti-Annexin A2 antibody (1:200).