

Product datasheet for **TA310038**

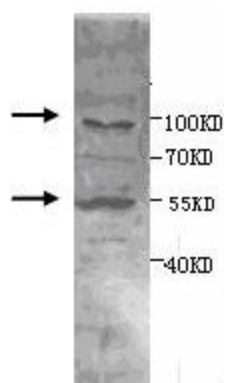
ADAM15 Rabbit Polyclonal Antibody

Product data:

Product Type:	Primary Antibodies
Applications:	WB
Recommended Dilution:	WB: 1:1000
Reactivity:	Human
Host:	Rabbit
Isotype:	IgG
Clonality:	Polyclonal
Immunogen:	Synthetic peptide conjugated to KLH
Formulation:	PBS, pH 7.4 with 0.05% sodium azide.
Concentration:	lot specific
Purification:	Purified
Conjugation:	Unconjugated
Storage:	Store at -20°C as received.
Stability:	Stable for 12 months from date of receipt.
Gene Name:	ADAM metallopeptidase domain 15
Database Link:	NP_003806 Entrez Gene 8751 Human Q13444
Synonyms:	MDC15
Protein Families:	Druggable Genome, Protease, Transmembrane



[View online »](#)

Product images:

Western blot analysis of human fetal liver lysates with anti-ADAM15 antibody (diluted at 1:1000). The antibody identified a band of approximately 90kDa furin processed forms of ADAM15 and a 55kDa cleaved products in human fetal liver tissue lysates. The antibody also recognized a fainter band of ~110kDa (zymogen).